

# LRG OSBP Update Presentation

## Maputo Corridor Logistics Initiative AGM



**Victor Nunes**

**29 May 2008**

# Purpose of the Presentation

- To provide a background on the LRG OSBP Project.
- To provide an overview of the LRG OSBP design.
- To provide an overview of the LRG OSBP process.
- To provide an update on the progress of the LRG OSBP Project.



# Outline of the Presentation

- Background
- The Drivers
- The Concept
- The Outcome
- The Design
- The Process
- Project Structure
- Progress
- Construction Milestones



# Background

- The Governments of South Africa and Mozambique indicated their intention to implement a combined one stop border post (OSBP) between the two countries at Lebombo and Ressano-Garcia with the objective to expedite passenger and goods traffic between the two countries.
- To that effect they signed the Agreement between the Governments of Mozambique and South Africa on a Combined Border Control Post on the Mozambique-South African Border on 17 September 2007.



# The Drivers

- Developmental imperatives - grow the economy, alleviate poverty and create jobs through:
  - co-operative governance within Mozambique and South Africa respectively and between Mozambique and South Africa;
  - regional integration through secure and facilitated people movements and trade (SADC and NEPAD goals);
  - improved service efficiencies (increased throughput; reduced times; improved safety and security, enhanced service and consumer satisfaction);
  - modernised infrastructure;
  - enhanced opportunities for public-private co-operation.



# The Concept

- Segmentation
- Joint processing (Joint controls)
- Most processing in lanes (Cars)
- Self assessment
- Intervention by exception - Green by default
- Downstream safety net
- Information sharing platform (Integrated systems - with safe guards)



# The Outcome

## A One Stop Border facility:

- commercial traffic will be processed at the new KM 4 freight facility on Mozambican territory;
- non-commercial traffic will be processed at the current location, with a new joint infrastructure spanning the border line;
- rail passenger traffic will be processed at the new rail facility on South African territory;





TRAIN STATION

MARKET MARKET

COMMERCIAL AREA

COMMERCIAL TRADING AREA

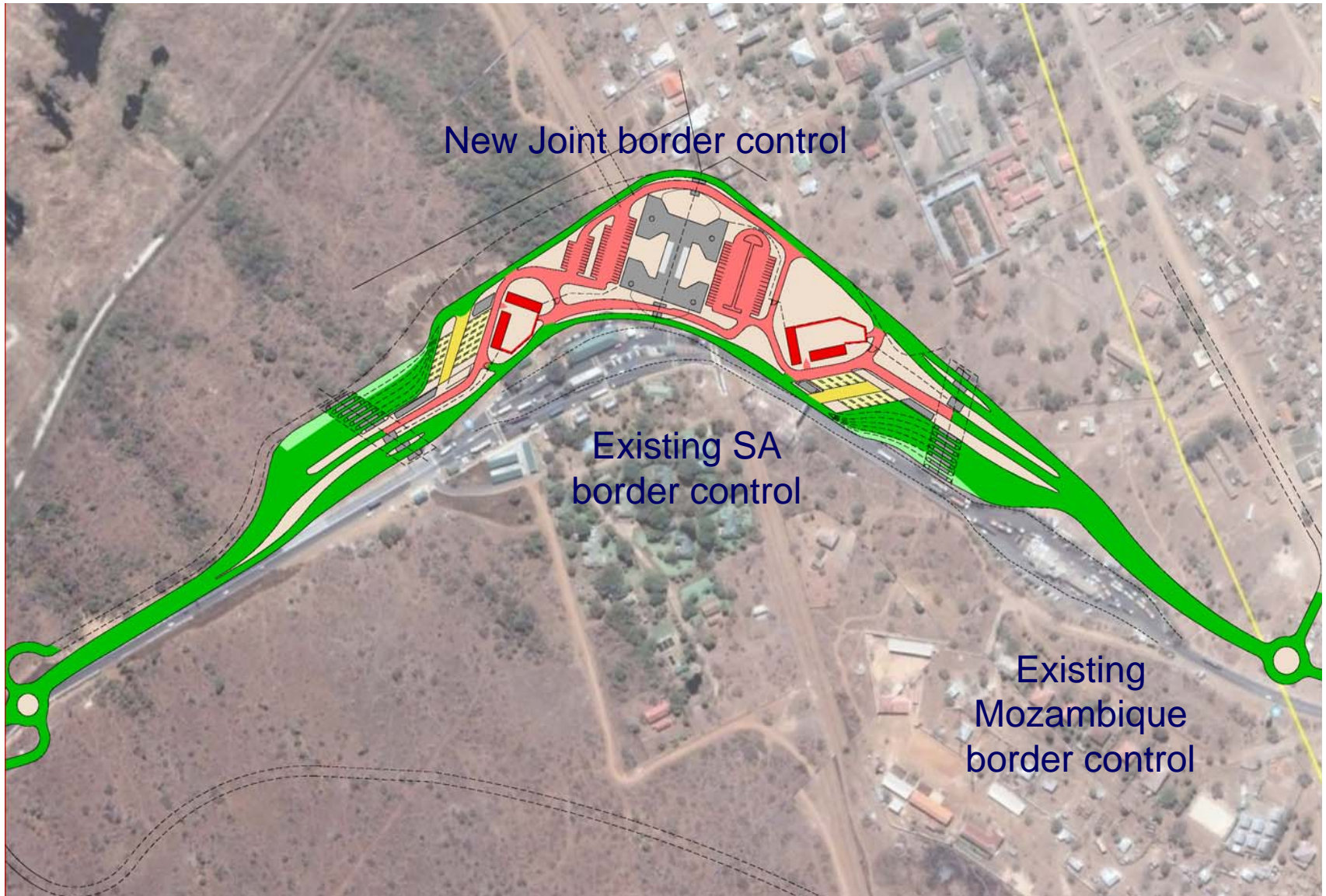
- CARS
- BUSSES/TAXIS
- EXISTING ROADS
- TRUCKS
- TRAIN
- PEDESTRIANS

URBAN DEVELOPMENT TOWARDS RESSANO GARCIA

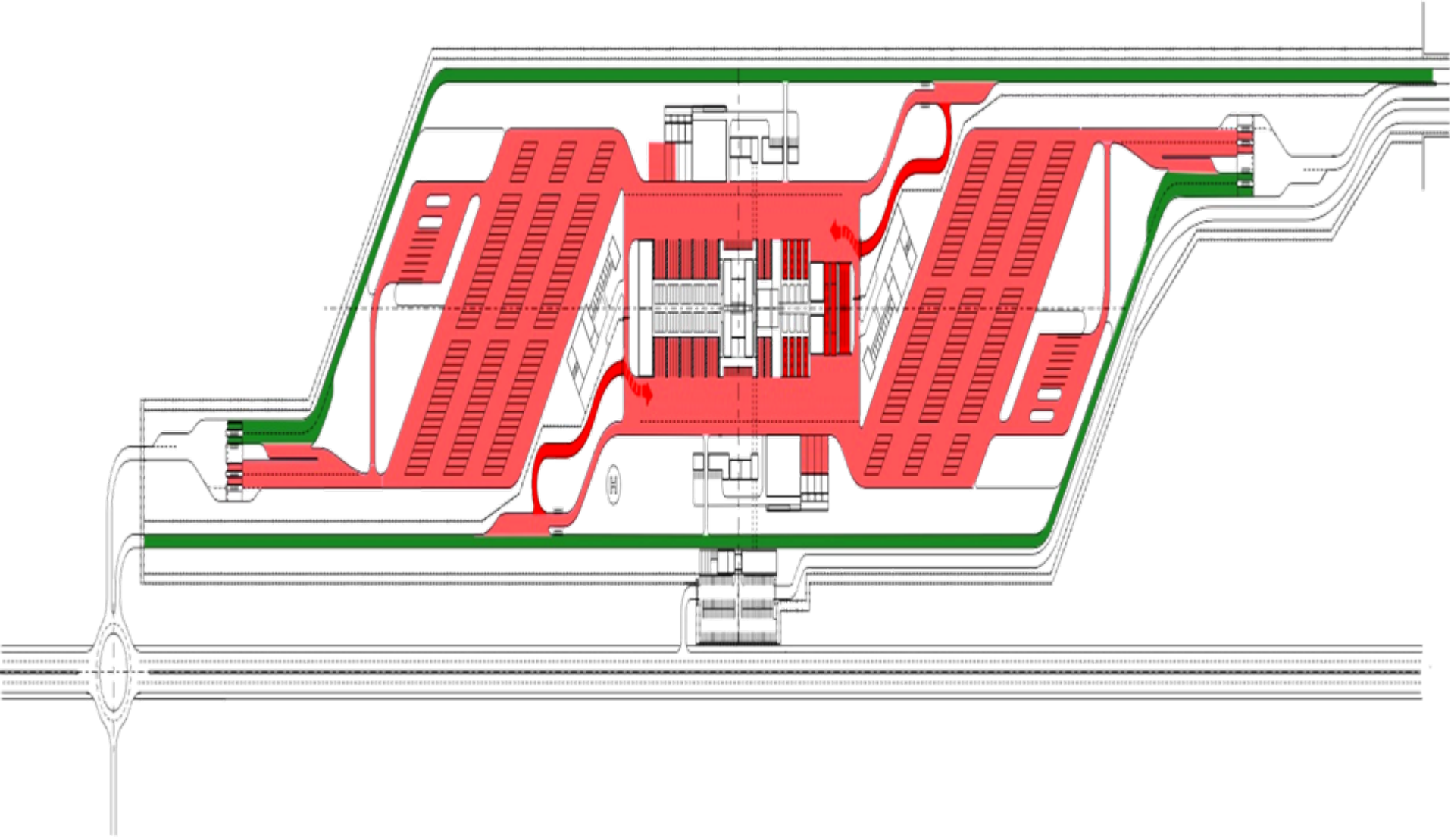
BONDED WAREHOUSES & COMMERCIAL DEVELOPMENT

KM 4 FREIGHT

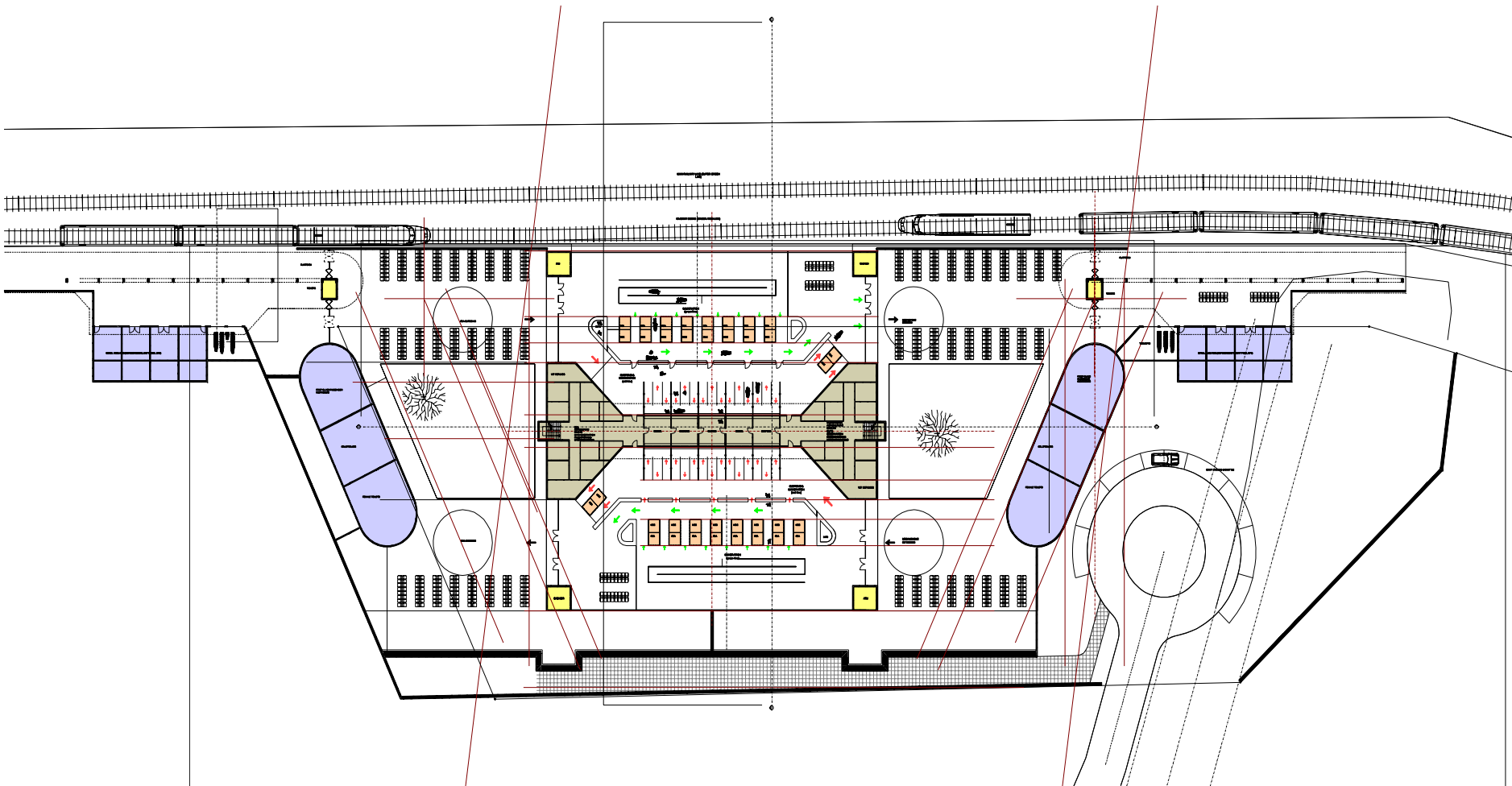
# The Design – Non Commercial



# The Design – Commercial



# The Design – Rail



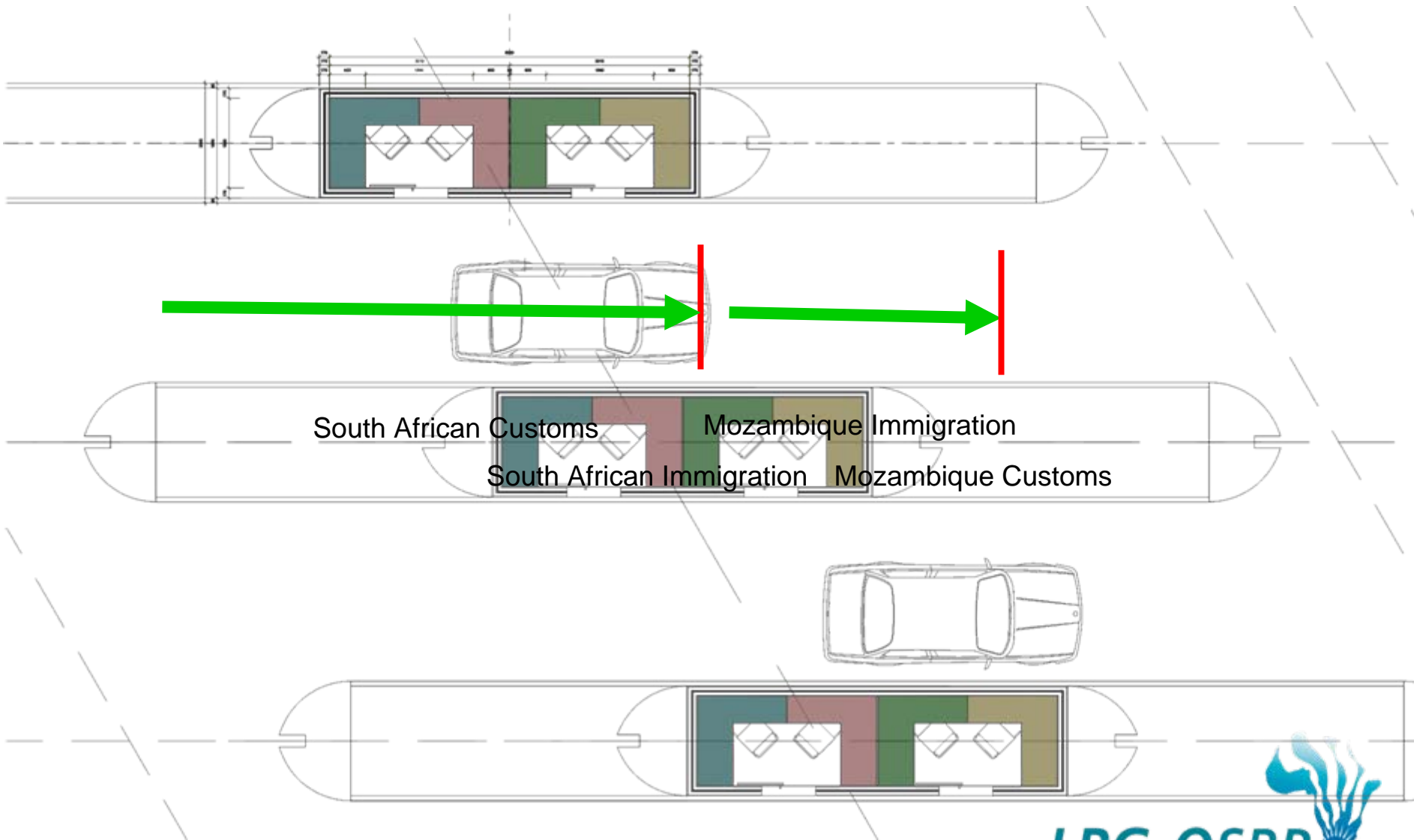
# The Process

## CARS AND MOTORCYCLES

- Super Green lane vehicles do not stop, except for random customs compliance checks.
- Green lane vehicles only stop at a single passport capture booth and can be subjected to random customs compliance checks.
- Red lane vehicles must park and carry out required formalities.



# The Process



# The Process

## BUSSES AND COACHES

- Processed at the car and passenger terminal or possibly processed at the KM 4 facility (Peak times).



# The Process

## PEDESTRIANS AND TAXIS

- Foot passengers enter the passenger terminal, clear the various exit and entry formalities, and board a car or taxi on the other side of the facility.



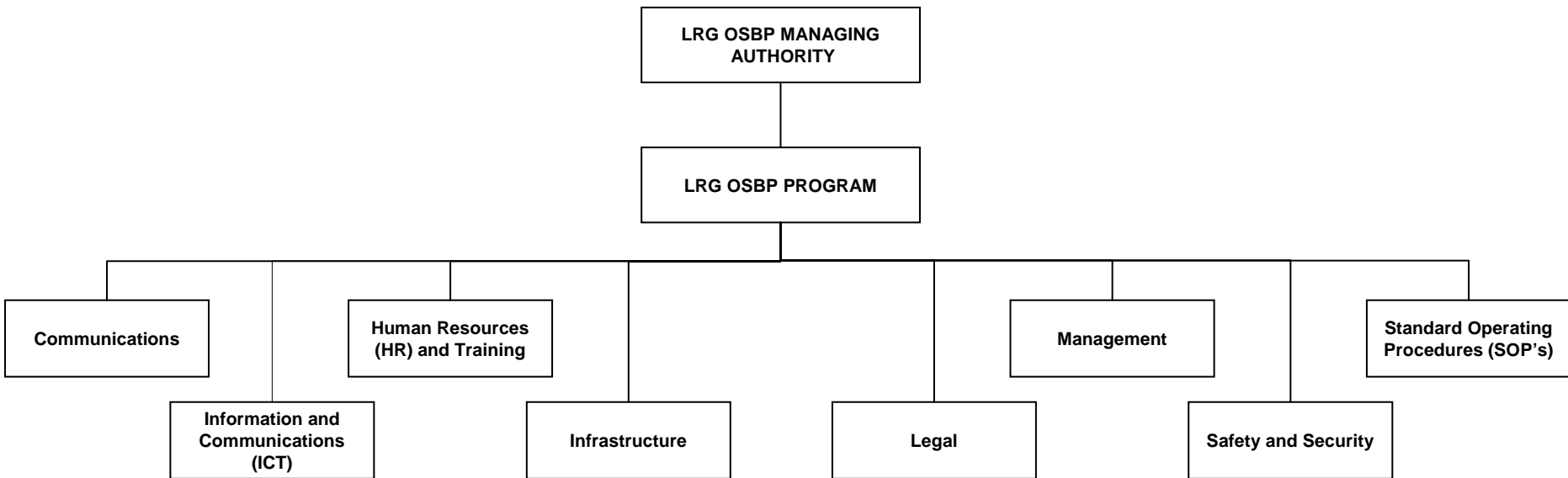
# The Process

## TRUCKS AND FREIGHT

- A fast track for those under an international transit regime.
- A fast track for those in a bilateral transit scheme which are not cleared at the border.
- A normal track for trucks which are cleared at the border.



# Project Structure



# Progress

- Bi-Lateral agreement signed between S.A. and Mozambique – Sep 2007.
- S.A. DPW appointed design team - Oct to Dec 2007.
- S.A. DPW design team compiled draft design of LRG OSBP - Jan and Feb 2008.
- LRG OSBP Design Workshop held in Maputo - Feb 2008.
- LRG OSBP Operating model presented and in principle agreement obtained on procedural layout and flow.
- Draft LRG OSBP facilities design presented and in principle agreement obtained on draft design.



# Progress

- Project Structure and workgroups proposed and Terms Of Reference compiled – Mar 2008.
- Workgroups representation from both SA and Mozambique departments.
- Detailed Design workshop held between S.A. DPW and departments - Apr 2008.
- Meeting held between S.A. DPW, design team and Shosholoza Meyl to outline LRG OSBP Project – May 2008.



# Construction Milestones

- Fencing current border post for temporary construction  
Jul 2008 – Aug 2008
- Temporary border construction  
Aug 2008 – Oct 2008
- Operation of Temporary border  
Oct 2008
- Construction of secure construction site  
Jul 2008 – Sep 2008



# Construction Milestones

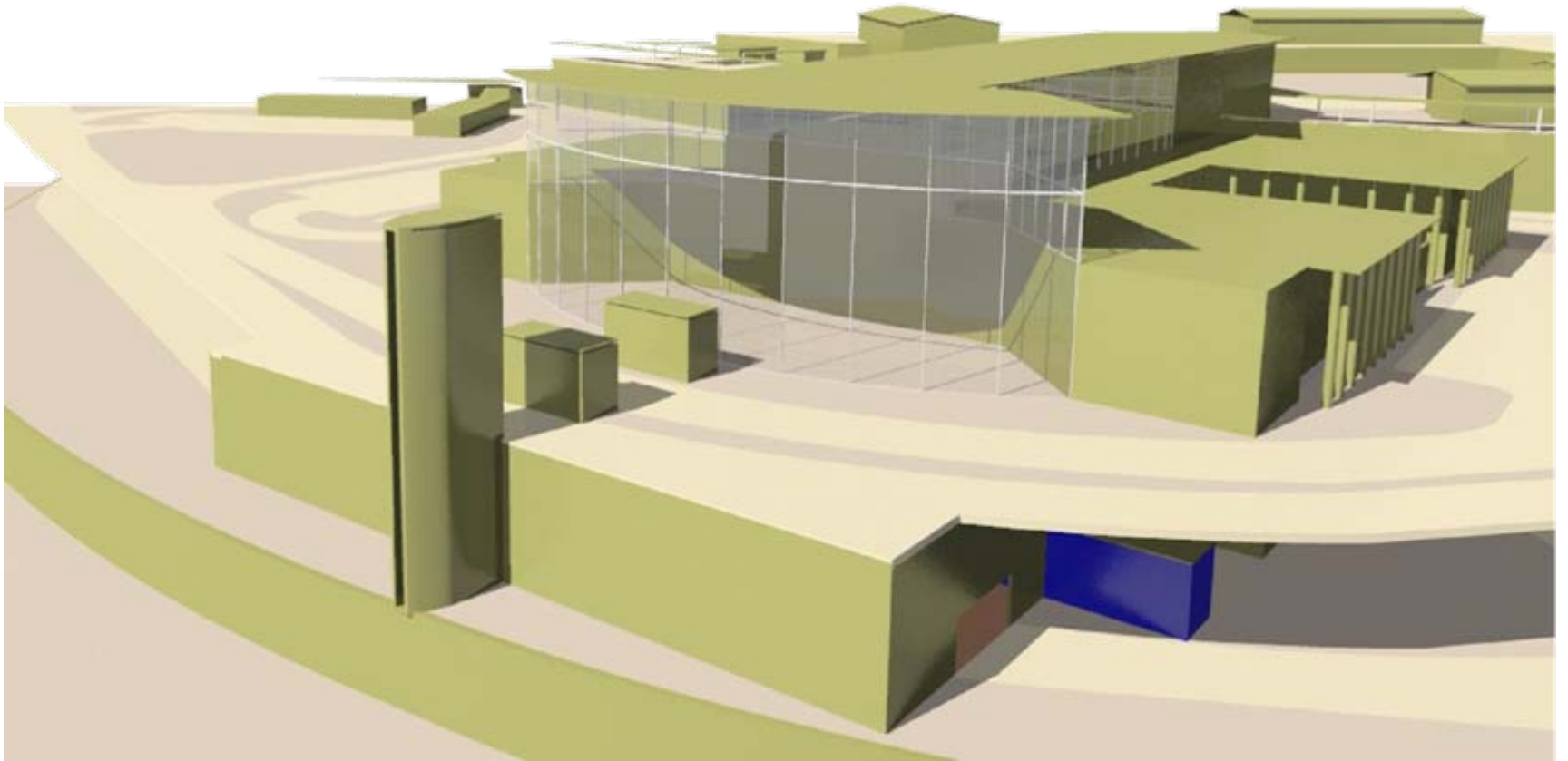
- Demolition and relocation of services  
Aug 2008 – Oct 2008
- Earthworks and retaining structures - KM4  
Oct 2008 – Feb 2009
- Earthworks and retaining structures - Main  
Non-Commercial facility  
Oct 2008 - Mar 2009

# Construction Milestones

- Construction of KM 4 facility  
Mar 2009 – Apr 2010
- Construction of Main Non-Commercial facility  
Apr 2009 - May 2010
- Construction of Rail facility  
Jan 2009 – Jan 2010
- Construction of KM 4 road  
Sep 2008 - Mar 2010



**Thank You**



**Muito Obrigado**